

# 07

## JOURNEY OF LIGHT

Zeenat Begam Yusof\*, Shamzani Affendy Mohd Din, Maheran Mohd Yaman, Nur Affah Mohyin, Mohamad SaifulNizam Mohamad Suhaimi  
Kulliyyah of Architecture and Environmental Design  
International Islamic University Malaysia

### ABSTRACT

The Journey of Light is the concept adopted for a project under AQS 1301 Multidisciplinary Project, a core course of the Kulliyyah of Architecture and Environmental Design (KAED), International Islamic University Malaysia (IIUM). This project aims to revitalize the Al-Ghazali Road located in IIUM Gombak Campus. The Al Ghazali Road is the famous secondary road in IIUM, with several commercial facilities. The road issue is flooding during heavy rain and lacking social and commercial facilities. This project aims to solve the issues by designing the Al Ghazali road using the concept of the Journey of Light in four phases. The four phases indicate Al Ghazali's contributions to preaching Knowledge throughout his lifetime. The phases are known as Knowledge of God, Knowledge of Self, Knowledge of the World, and Knowledge of the Future World. These phases are distinguished by the different materials used and vegetation based on the Alhambra case studies.

**Keywords:** International Islamic University Malaysia (IIUM), main road, secondary road, Al Ghazali

\*Corresponding author: zeensoni@iium.edu.my

### INTRODUCTION

The project aims to design a solution to revitalise the Al-Ghazali Roadway, which includes the redesigning of the façade, flood mitigation, and upgrading Sultan Haji Ahmad Shah (SHAS) Mosque Lower Courtyard. The Journey of Light concept manifests the legacy of Imam Al-Ghazali by improving the building façade adjacent to the road, creating spaces for relevant cultural and social activities in the vicinity, mitigating flooding, redesigning the lower courtyard landscape with relevant social-cultural activities during the day and night and blending of the SHAS Mosque entrance foyer with the proposed design.



Figure 1: Designed Al Ghazali Road

### CONCEPTUAL PROCESS, PROCEDURE AND SCHEMATIC

The concept, 'Journey of Light', represents Imam Al-Ghazali's ten years of intellectual and self-discovery upon his extreme personal crisis at 36 years old. Imam Al Ghazali humbled his position throughout his lifetime, though he later became a minister. Four elements of Al Ghazali's novelty stood out, i.e. understanding the self, the deity, the universe, and the future. In manifesting the novelty into architecture, these four components contribute to human nature, preaching and understanding, muamalat (daily activities), and sustainable development.

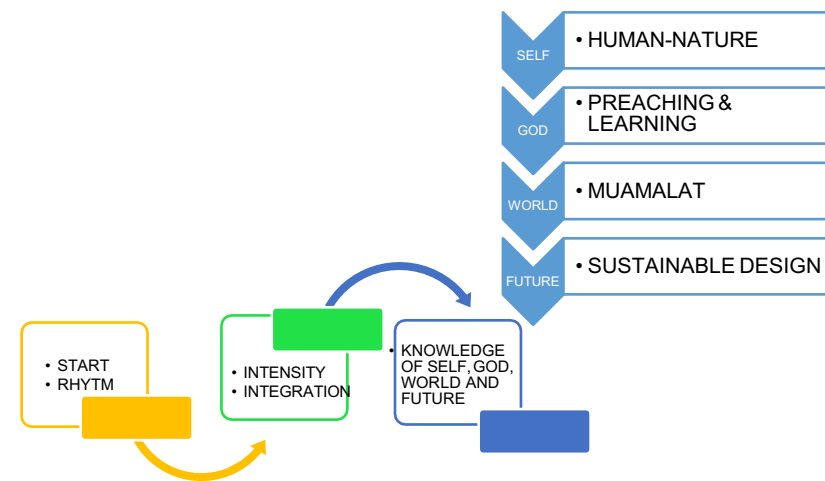


Figure 2: Conceptual diagram

## CASE STUDIES

The project's design was derived from the research on Alhambra elements such as plants, water features, mosaics and tiles (Figure 3). The Al Ghazali road is divided into four zones, as shown in Figure 5: commercial area, social area, servicing area, and gathering area.



Figure 3: Alhambra garden in Spain  
(Source: <https://www.thoughtco.com/the-alhambra-4138628>)



Water feature



Plants



Mosaic

Figure 4: Design elements of Alhambra used as a reference for this project  
(Source: <https://www.thoughtco.com/the-alhambra-4138628>)

## PROJECT FINDINGS

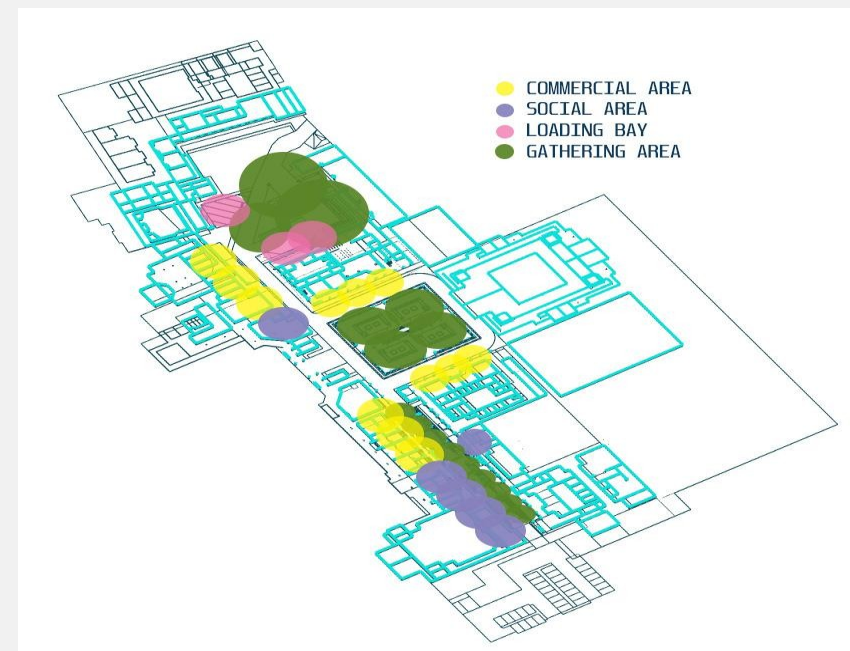


Figure 5: Zoning layout proposed for Al Ghazali Road

## DESIGN MORPHOLOGY






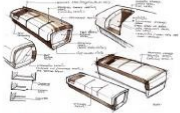
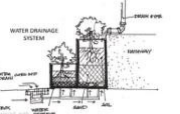
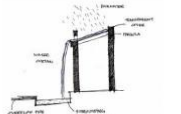
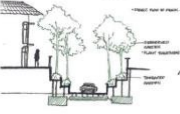


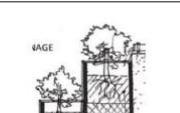
Sub Functions	Solutions options		
Archway design	 Depressed Arch	 Tudor Arch	 Equilateral Arch
Seating area	 Square design	 Common bench design	 Curved bench design
Drainage and water supply system	 Water planting system	 Water Curtain system	 Anti-flood system
Planter box design	 Multi tier planters	 Terrace planting for for ethnobotany	 Double tier planters

Figure 6: Design morphology elements for Al Ghazali Road

## MASTERPLAN OF AL GHAZALI ROAD

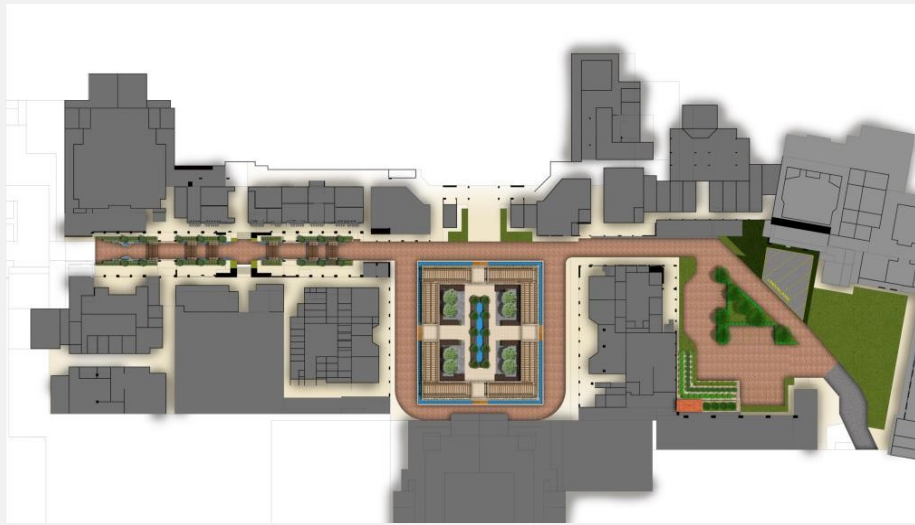


Figure 7: Overall masterplan of Al Ghazali road  
( Source: Authors)



Figure 8: Front elevation of Al Ghazali Road  
( Source: Authors)

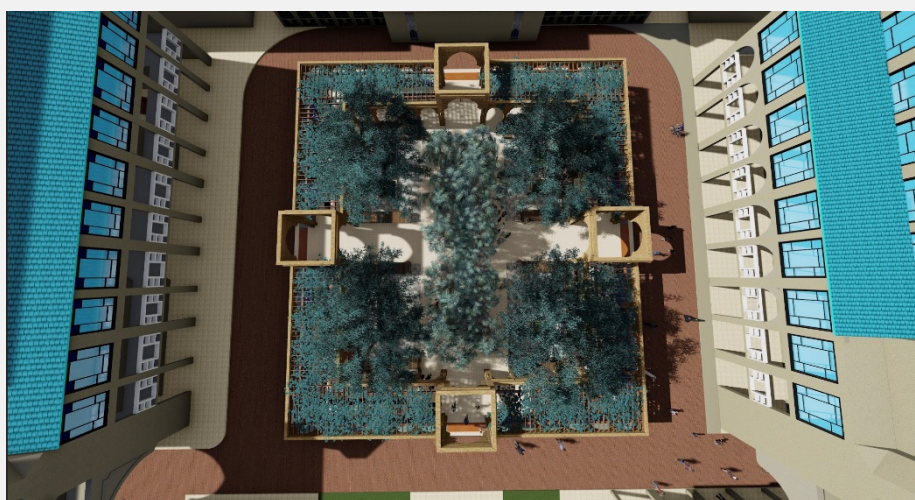


Figure 9: Detail design of SHAH Mosque lower courtyard  
( Source: Authors)



Figure 10: Perspective view of SHAS mosque courtyard design  
( Source: Authors)



Figure 11: Interior view of the SHAS Mosque courtyard  
( Source: Authors)

The lower SHAS's mosque courtyard is an open area surrounded by several shops. The courtyard was infrequently used due to the need for shades and proper seating. In order to overcome the problem, this courtyard proposed the design of arches as shaded pathways. These arches are made of exposed brickworks to give the ancient rustic image of the architecture of the old Islamic world (Figure 11). In the middle of the courtyard, dense vegetation was proposed to be planted where students could enjoy the courtyard (Figure 12). Seating and eating areas are provided in the courtyard. Flowering and scented plants were planted along the pathways to revive the courtyard. The pathways are to be designed to accommodate small kiosks for various selling activities (Figure 13).

## MASTERPLAN OF AL GHAZALI ROAD



Figure 12: Dense vegetation proposed in the middle of the courtyard



Figure 13: Pathway design to accommodate the selling kiosk



Figure 14: Herbs garden was proposed at the back gate of Al Ghazali road (near the IRKH Kuliyyah)

## INNOVATION



Figure 15: Automatic water system proposed for flowering bed along the pathway



Figure 16: Water pond provided along the pathway to provide cooling effect

## CONCLUSION

The design for this project is divided into three physical zones. The first zone was the Al Ghazali Road, designed to provide various commercial facilities. The commercial area is identified by a mass of transparent glass with geometrical patterns grill. The second zone was the mosque's lower courtyard, designed with arched pathways made of exposed bricks. The courtyards provide a relaxing ambience from the vegetation of various big trees and flowering plants. Water elements were also introduced in the courtyard design to give added serenity. The last zone of the road was to create a herb garden that would serve the restaurant near the second exit of the road. The overall ambience of the road was designed to emulate the design of Alhambra, Spain.

## ACKNOWLEDGEMENT

All praises be to Allah S.W.T (the Almighty) and Prophet Muhammad S.A.W. Without His blessings, this project may not be successfully concluded. Due acknowledgment to all the lecturers and students involved in the 2021 session of Multidisciplinary course for completing this project and to IIUM Rector for proposing this project for the future upgrading of IIUM Al Ghazali road.

## BIBLIOGRAPHY

SRC IIUM Gombak. (n.d.). Retrieved September 15, 2020, from <https://www.facebook.com/srciiumgombak/posts/petition-the-issue-on-closure-of-al-ghazali-road-few-days-back-src-iium-1415-had-363360940513802/>

SRC IIUM Gombak. (n.d.). Retrieved September 15, 2020, from <https://www.facebook.com/srciiumgombak/posts/al-ghazali-road-finally-reopenedassalamualaikum-wbt-dear-iium-studentsfor-almost/646120472237846/>

(n.d.). Retrieved September 16, 2020, from [http://www.etawau.com/edu/UniversitiesPublic/IIUM/History\\_HUM.htm](http://www.etawau.com/edu/UniversitiesPublic/IIUM/History_HUM.htm)

Kirabaev, N., & Al-Janabi, M. (2018). The Sufi Path of al-Ghazali. Proceedings of the 2nd International Conference on Culture, Education and Economic Development of Modern Society (ICCESE 2018). doi:10.2991/iccese-18.2018.282

Schimmel, A. (2019, November 20). Sufism. Retrieved August 25, 2020, from <https://www.britannica.com/topic/Sufism>

Ong, S. (2014). Students are unhappy over closure of Al-Ghazali road. Retrieved September 15, 2020, <https://news.iium.edu.my/?p=36371>

Qal'at al-Hamra Architecture and History (2018) The Amazing Architecture of Spain's Alhambra. <https://www.thoughtco.com/the-alhambra-4138628>