

02

COMPORT : REDEVELOPMENT OF KUALA BESUT TERMINAL AS COMMUNITY HUB IN TERENGGANU

Abdussalam Khalib and *Zeenat Begam Yusof
Department of Architecture, Kulliyah of Architecture and Environmental Design,
International Islamic University Malaysia

ABSTRACT

Besut district located in the state of Terengganu on the East coast of Peninsula Malaysia which is rich in cultural heritage and various tourist attractions. However, the district's tourism sector has yet to reach its development potential. The town, Kuala Besut, is just a tourist route for those who want to get to Perhentian island. Tourists bypassed the town's innate attractions. From the survey, three issues were identified. The first issue is the lackadaisical state of the boat terminal facilities, such as restaurants, seating areas, toilets, and parking. The second issue is the seasonal business, where vendors at the terminal can only operate during the dry season. The third issue is the need for more opportunities to promote the art and cultural products of Kuala Besut at the tourist prong jetty. Therefore, the thesis aims to redevelop Kuala Besut terminal, which can solve all three issues architecturally. The objective of the study is to design appropriate terminal facilities, spaces for vendors and spaces for art and cultural products promotion. The research methodology used for this study is the qualitative method using literature reviews, case studies and interviews for brief formulation and site studies for context. The study's findings create an architectural solution for the three issues and help to boost Kuala Besut's local economy and tourism industry.

Keyword: Community hub, Art and culture, Kuala Besut terminal, Perhentian Island

*Corresponding author: zeensoni@iium.edu.my

INTRODUCTION

Kuala Besut is famous as the en route boat terminal jetty to Perhentian island. The thesis examined existing issues of the Kuala Besut boat terminal or jetty and proposed appropriate architectural design solutions for its redevelopment. The rundown condition of the jetty required rejuvenation as the jetty is the sole international tourism feature in Besut. International tourists from all over the world visited Perhentian island via the jetty. The jetty has the potential to boost locals' economy and cultural heritage, such as batik and timber carving. The proposed scheme combines the illustrious aspects of architectural spaces, which address the issues of inadequate infrastructure, potential economy, and art culture of the current jetty/boat terminal. The intention is to establish Kuala Besut jetty terminal as the centre for tourist destinations and a community centre for the local community.

The project focuses on developing the existing jetty into a safe with appropriate facilities as the passenger terminal that address the three issues.

TERENGGANU

Terengganu is a state located on the east coast of the Peninsula Malaysia. The elongated shape of Peninsula Malaysia caused almost every state to have a coastline and beautiful beaches. Terengganu have 10 districts which are Kemaman, Besut, Dungun, Marang, Merang, Kuala Nerus, Kuala Terengganu, Hulu Terengganu, Setiu and Kuala Besut. Terengganu is one of the states in peninsula Malaysia famous for cultural and nature tourism (Rosniza et al., 2012)



Figure 1: COMPORT Perspective
(Source: Author)

KUALA BESUT

Besut district is located in the northernmost part of Terengganu state bordering Terengganu and Kelantan. Besut's location attests to the district's assimilation of Kelantan's architecture, heritage and culture. The district's geographical distance from the state capital of Kuala Terengganu makes the Besut district distinct from other districts in Terengganu.

THESIS ISSUES

The core issue of this thesis is to address the existing infrastructure and services that do not meet the needs and demands of the existing jetty, followed by the economic and cultural concerns of the local populace. Generally, the state of the existing infrastructure is the primary concern.



Figure 2: Overall thesis issues
(Source: Author)

INFRASTRUCTURE ISSUE

The existing jetty can only accommodate approximately 200 people at any one time, meaning that it cannot accommodate the growing number of passengers and tourists to Besut and Perhentian islands. Currently, Besut river depth is being deepened to allow boat operators to use boats and ferries with a greater passenger capacity and size. Ironically, the existing terminal and jetty were not designed to accommodate the larger boats and ferries. Operation for departure and arrival at the existing jetty coincides with limited space in the existing jetty. Each year sees a rise in the total number of passengers and boats. However, the jetty does not provide sufficient seating, toilets, and restaurants (Muhammad Rusli, 2016).



Figure 3: Current Kuala Besut Boat Terminal Jetty Condition
(Source: Author)



Figure 4: Overcrowding and Safety Concern at the Existing Passenger Terminal and Jetty
(Source: Author)

ECONOMY ISSUE

The Besut economy relies heavily on tourism activities during the summer months. Perhentian island is congested from March through September every year. Tourism is the only source of income for the jetty and the local businesses in the immediate area (Halim et al., 2015). Consequently, the locals' are unable to make a living during the monsoon season (Abdul Latif, Rohaizah, 2009). The suspension of tourism at the time of Covid 19 served as a wake-up call for the area's residents. The local community was severely impacted. Therefore, the redevelopment of the terminal and jetty facilities to combine the activities of tourism and economy at this centre is significant for the local community's economic development.



Figure 5: Economy Issue
(Source: AWANI, 2016/2020)

CULTURAL ISSUE

Besut district is rich with natural and cultural heritage, including places for tourism purposes. However, the tradition was not well preserved and promoted (Wan Nordin et al., 2022). The culture and heritage of Besut can be rekindled and rejuvenated by providing facilities for art and craft as shops and exhibition areas at the terminal.



Figure 6: Cultural Issue in Kuala Besut (Source: Berita Harian, 2016)

STUDY AIM

The aim of this design thesis is to create a conducive modern integrated terminal and community hub for both local and international tourists to reclaim the transit spirit of Pekan Kuala Besut

OBJECTIVES

The objectives address the following issues:

1. Infrastructure issue

To design appropriate spaces at the terminal.

2. Economic issue

To design appropriate spaces for vendors to operate year-round.

3. Cultural issue

To design appropriate spaces to promote art and cultural products of Kuala Besut.

THEORETICAL FRAMEWORK

The theoretical framework of the thesis focuses on the infrastructure of the terminal and jetty, the opportunity for economic growth of Kuala Besut and the promotion of local culture as identity and allied commercial activities.

Design Thesis Framework				
Component	Issue	Cause	Research Objective	Architectural Solution
Infrastructure	Existing Infrastructure and services do not accommodate the needs and demands of the existing ferry jetty	Lack of terminal facilities and amenities	To enhance existing facilities of terminal and jetty	Proposed a ferry terminal with designated promenade with innovative architecture that accommodates the users
Economy	Economy of the local people depends on seasonal tourism	Monsoon Season	To sustain the economy of the local community	Proposed a building that give opportunity to locals to enhance their income*
Cultural	Lack of cultural enhancement	Dying culture and tradition Lack of integration of heritage facilities	To revive existing cultural community identity	Proposed a place that not only provide ferry terminal hub but also a community centre that reflect local cultural and enrichment of livability through building incorporated programme

Design Thesis Question	Design Thesis Objectives	Component and Approaches	
What is the main intention of the building proposed?	to create an conducive and modern intergrated terminal and community hub	Conducives	Living
What is the architectural solution to ease movement of targeted users within the building?	To implement an innovative design into the building programmes to assist the users especially the tourist and local community	Infrastructure	Cultural Experience
How does the proposed typology benefit to local community?	To revive the genius loci of the local community through a seamless community magnet design	Social	Community Experience

Figure 7: Design Thesis Framework (Source: Author)

METHODOLOGY

A qualitative research method was adopted for this study. Data collection methods include case studies, interviews, observations and studies of the site and its context. The process includes analysis and synthesis as part of the overall design process to find appropriate solutions that can fulfil the aim and set objectives .

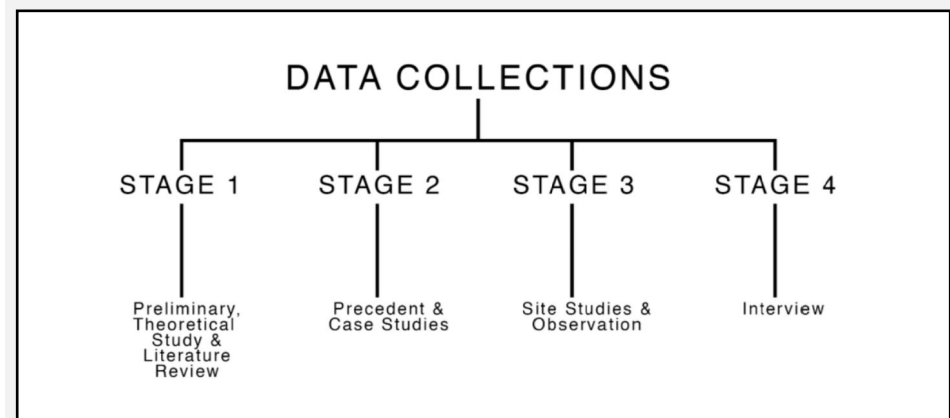


Figure 8: Data Collection Methodology (Source: Author)

THESIS STRUCTURE

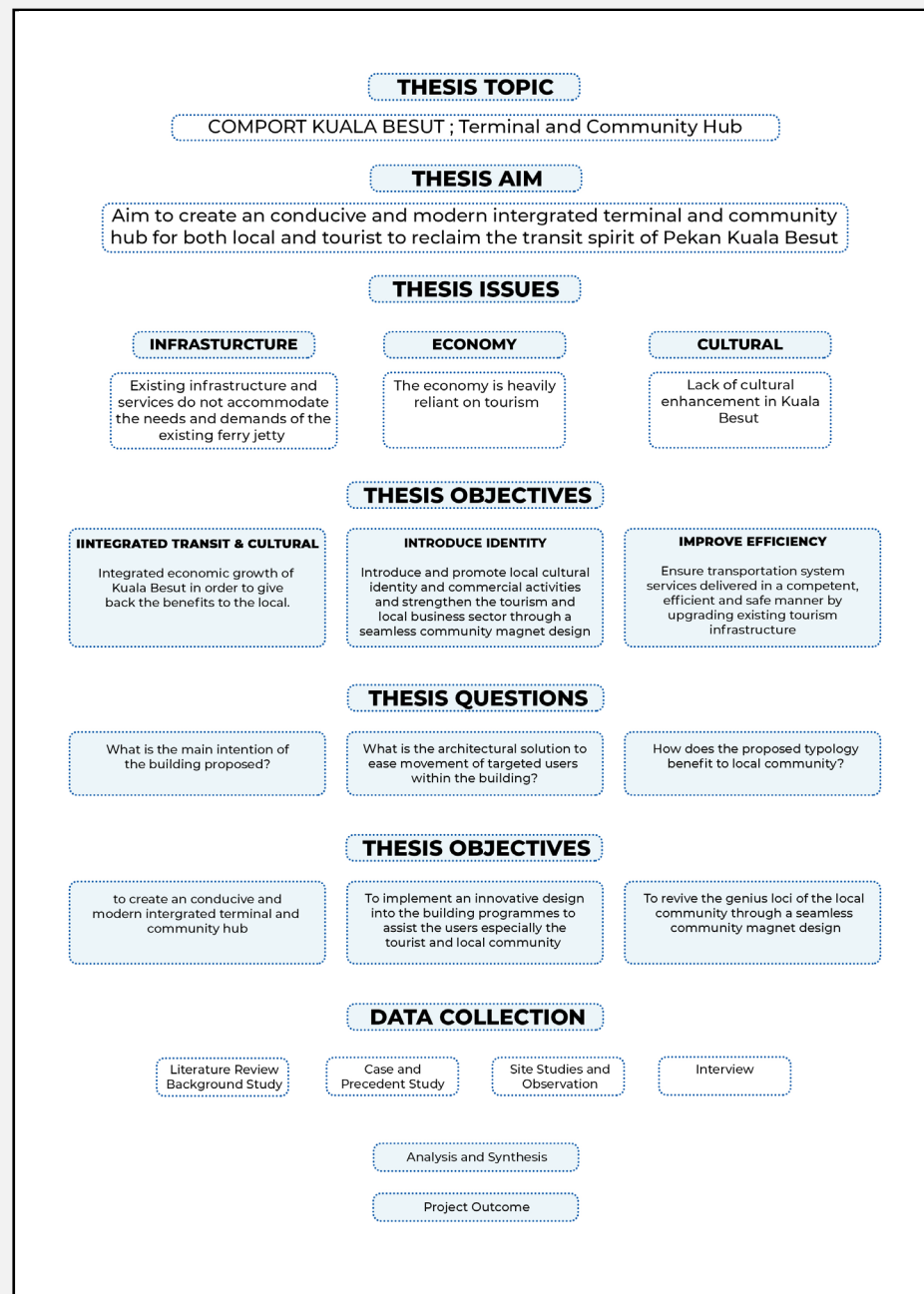


Figure 9: Outline Thesis Structure
(Source: Author)

SITE INTRODUCTION

The proposed site located at Kuala Besut, Terengganu Malaysia. The existing area is a terminal and jetty to Perhentian Island. The location is chosen based on several criteria, such as:

1. Rich with cultural heritage significance
3. Lack of infrastructure and facilities
4. Accessible (accessible via vehicles and pedestrians)
5. Good road network
6. Pertinent issue on infrastructure, economic and cultural significance

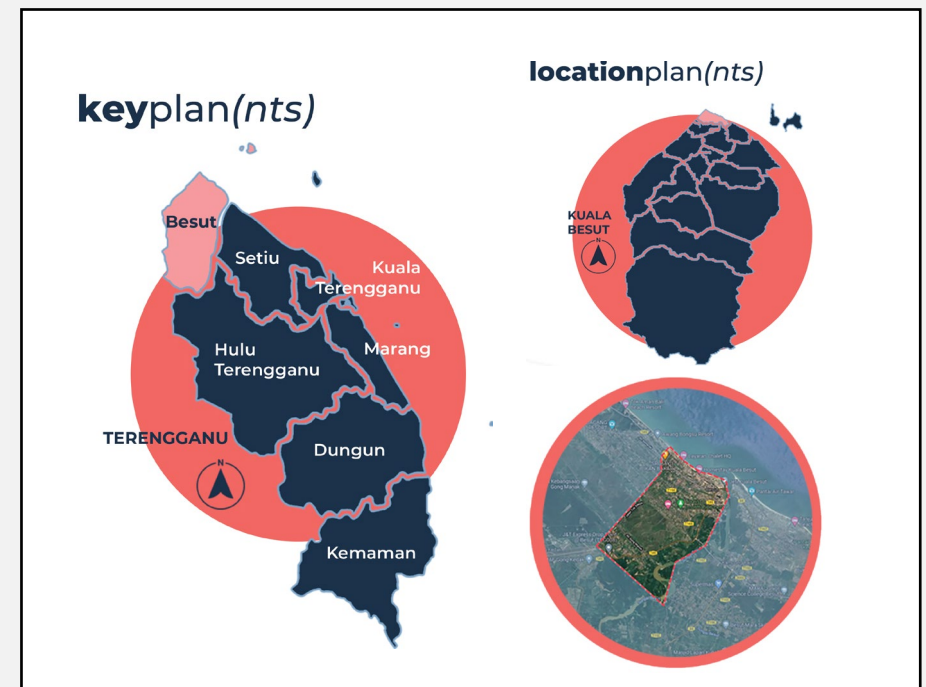


Figure 10: Key Plan and Location Plan indicate the location of the proposed site
(Source: Author)

Kuala Besut is best known as a stopover for travellers on their way to the Stop & Route Island main coastline area of Terengganu– Kelantan but receives significantly less attention from other visitors.



Figure 11: Macro Accessibility to the site
(Source: Author)



Figure 12: Micro accessibility to the site
(Source: Author)

SITE INFORMATION

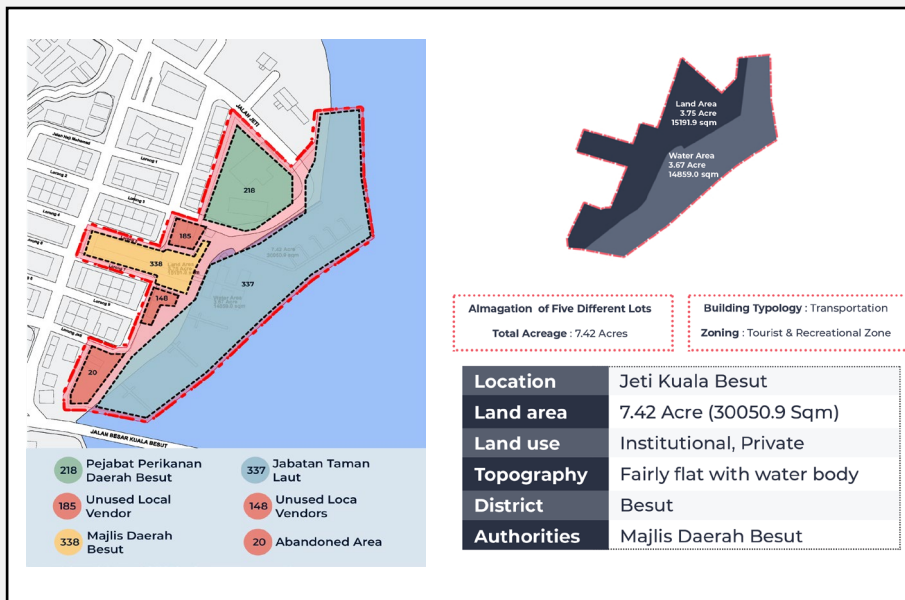


Figure 13: Key Plan and Location Plan indicate the location of the proposed site
(Source: Author)

SITE ANALYSIS & SYNTHESIS

The overall synthesis of the proposal is based on the site analysis to create a building design that can respond to its surrounding environment. The design synthesis considers accessibility and sensory, manmade features & utilities and visuals in the make-up.

Sensory

Surrounding view in proposed site

Petunjuk

- Kuala Besut Main Road
- Axis Vista
- View from Site
- View from Site
- Good View
- Bad View



Figure 14: Sensory Analysis in Site
(Source: Author)

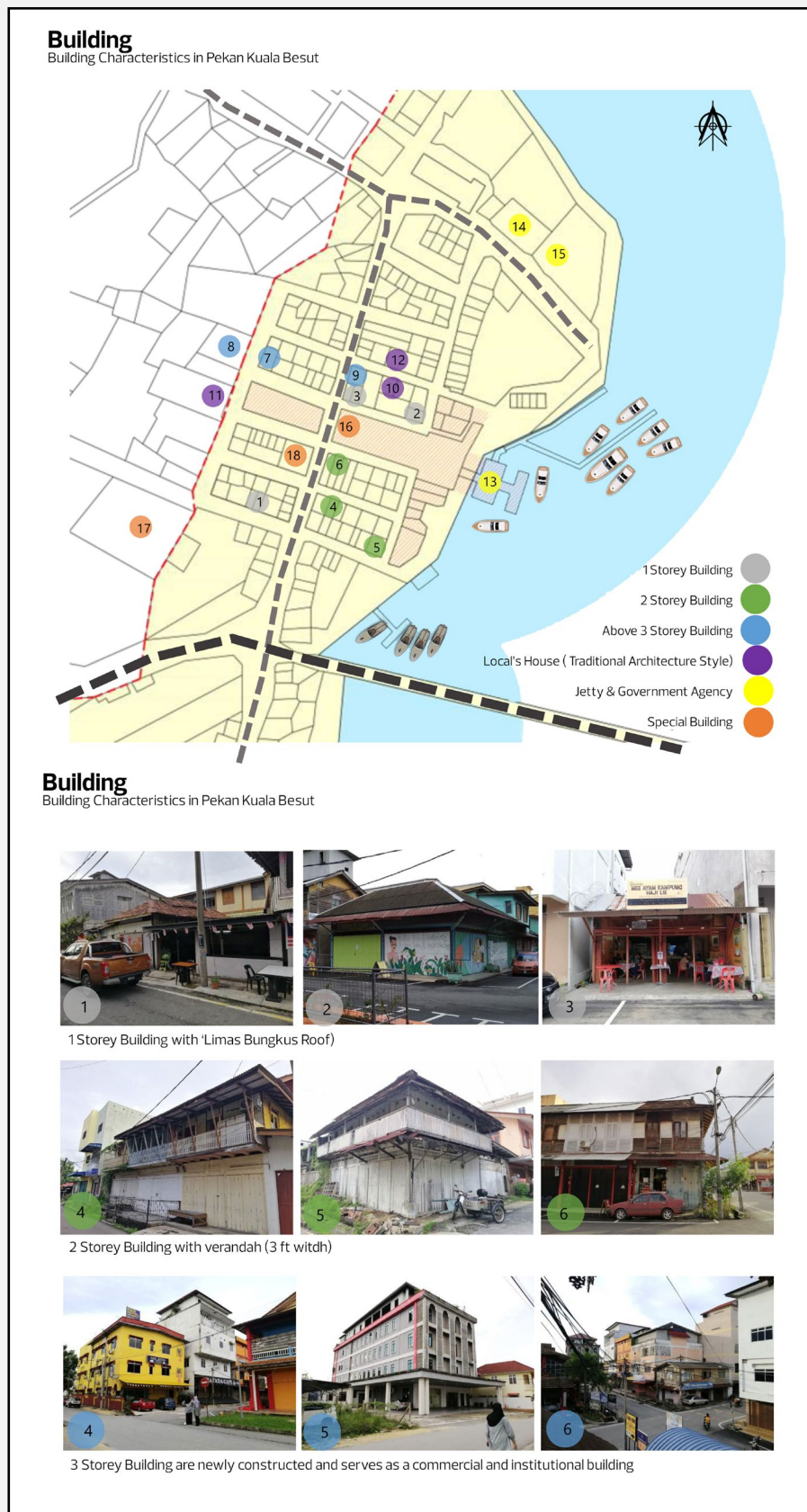


Figure 15: Building characteristics on Kuala Besut site (Source: Author)



Figure 16: Building Features on Kuala Besut site (Source: Author)

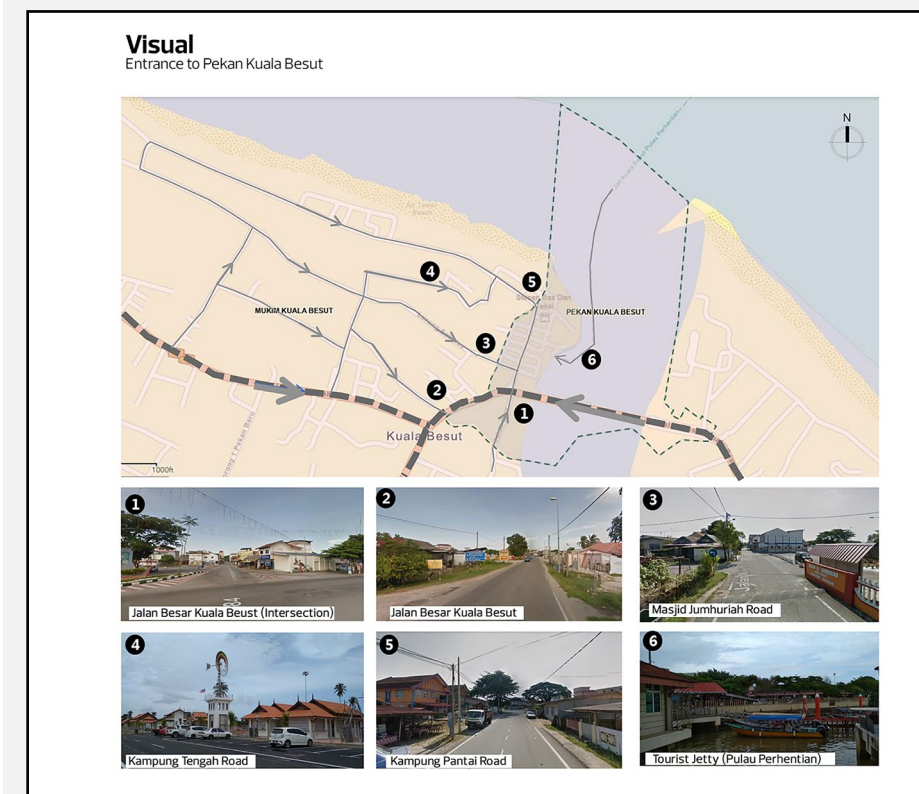


Figure 17: Visual on Kuala Besut site (Source: Author)



Figure 17: Design Synthesis (Circulation)
(Source: Author)

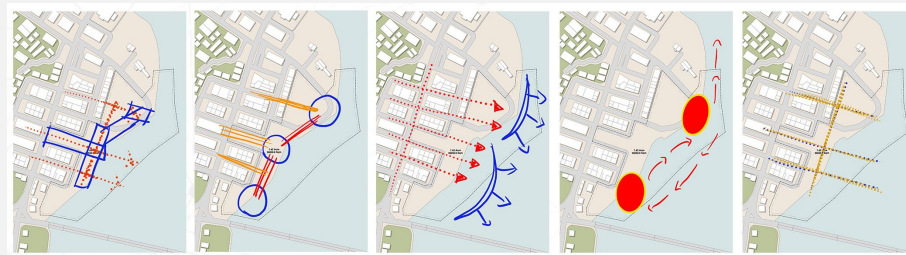


Figure 18: Design Synthesis (Space Planning)
(Source: Author)

DESIGN CONCEPT

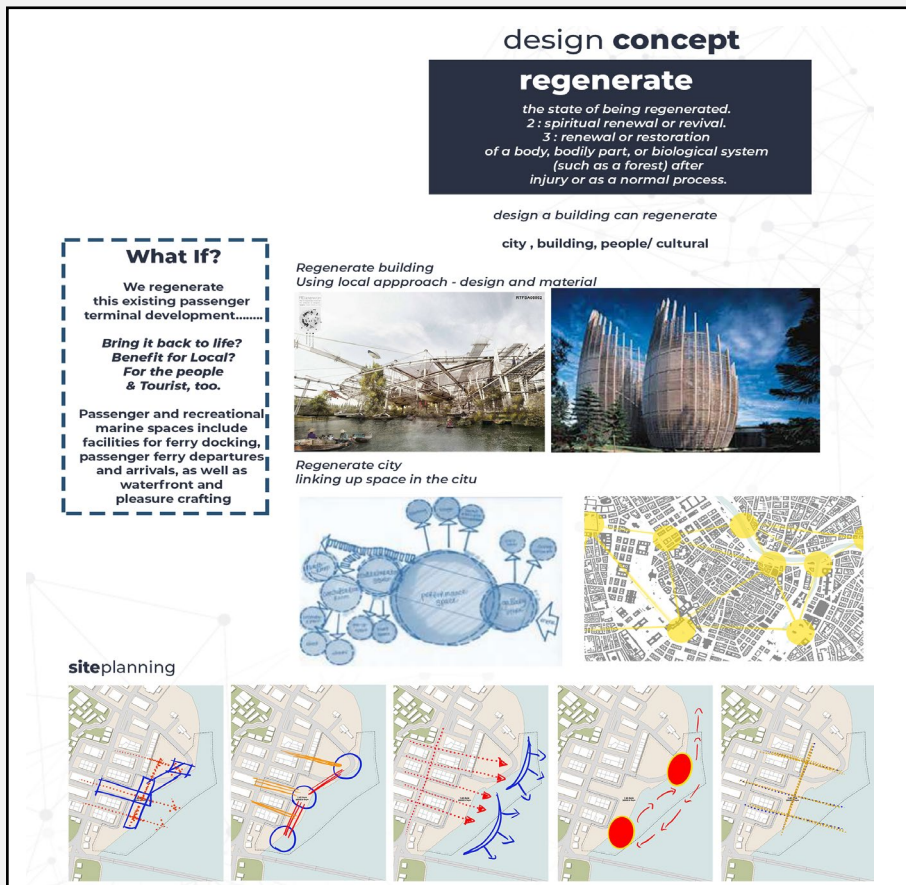


Figure 19: Design Concept for the proposed Kuala Besut terminal and jetty
(Source: Author)

FORM DEVELOPMENT



Figure 20: Form Development
(Source: Author)

RESEARCH / PROJECT FINDING

SITE PLAN

The design based on the concept of regenerate which using datum or focal point as architectural principles which tap tourist from cultural lane and parking area to the main exhibition area. All the spaces are facing towards the Besut river and elevated on the water. The centre was divided into several zoning such as departure, main exhibition area, art and crafts shops, eatery area, open spaces and arrival zone.



Figure 21: Site Plan of Kuala Besut Proposed Terminal and Jetty
(Source: Author)

GROUND FLOOR PLAN

The main facilities are concentrated on the ground level, which includes the terminal's lobby for arrival and departure jetty. There is also an open area for local economic activities connected with a pedestrian lane of the town to ease and attract a pedestrian to come. More, facilities such as the eatery area are located along the departure lane with a small kiosk to ease tourist use. Furthermore, cultural-related kiosks and shops are located along the arrival lane to promote to passengers and tourists who use the lane from the arrival jetty.



Figure 22: Ground Floor Plan of Kuala Besut Terminal and Jetty
(Source: Author)



Figure 23: Proposed Comport Entrance with public parking
(Source: Author)

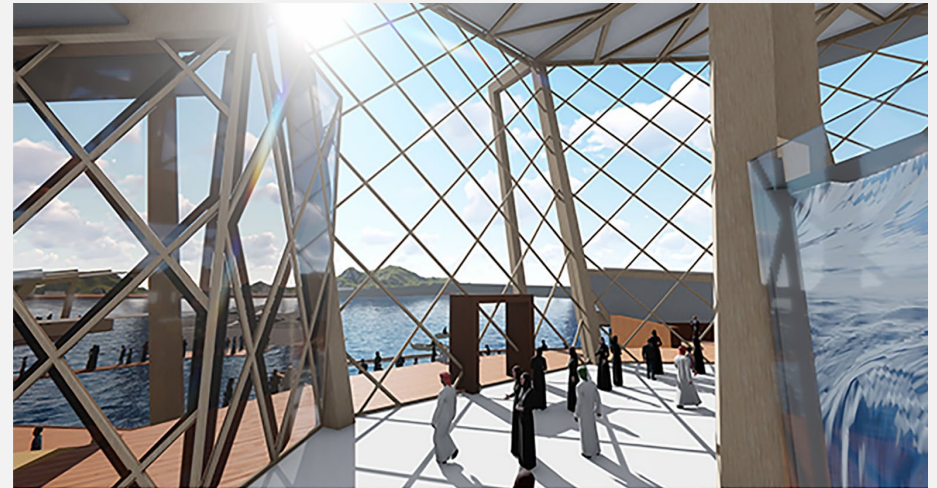


Figure 24: Lobby in Main Entrance of the Terminal building
(Source: Author)



Figure 25: Public Promenade in centre of terminal building
(Source: Author)



Figure 26: Kuala Besut proposed Departure Jetty
(Source: Author)

FIRST FLOOR PLAN

The first-floor level of the terminal building focused more on semi-public and private areas: management offices, multi-purpose halls, upskilling and cultural skill classes. The facilities are also provided for the local community and the public. The location of both facilities takes into account the need for privacy and the program of the facilities. There is also a void space in the main lobby to enhance the welcoming feel of the area.

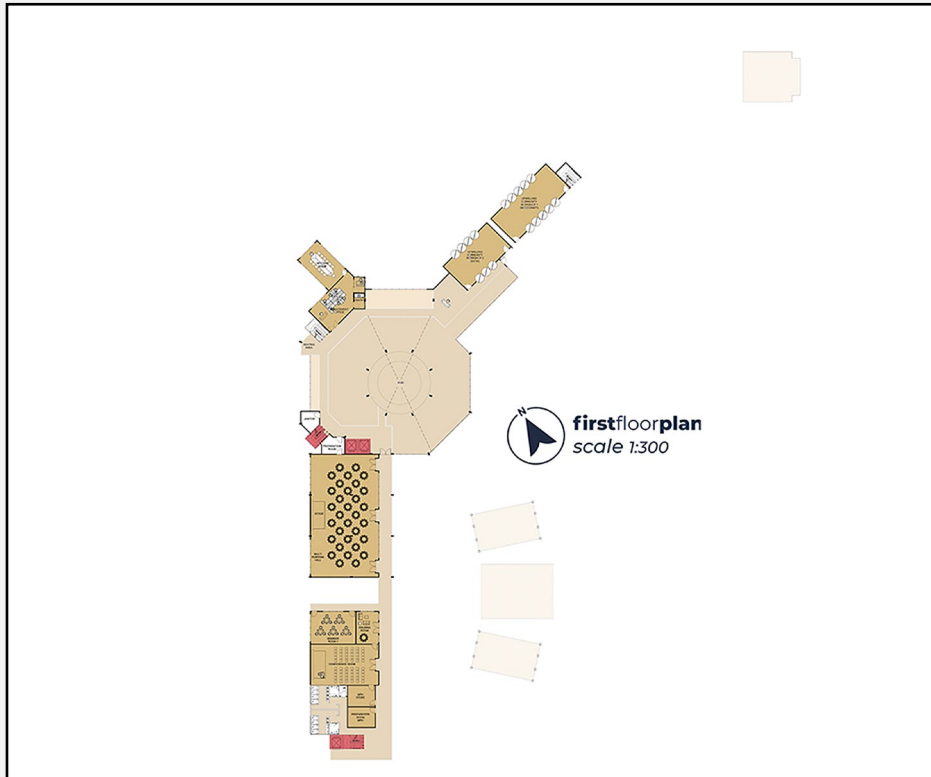


Figure 27: First Floor Plan of the Terminal building
(Source: Author)

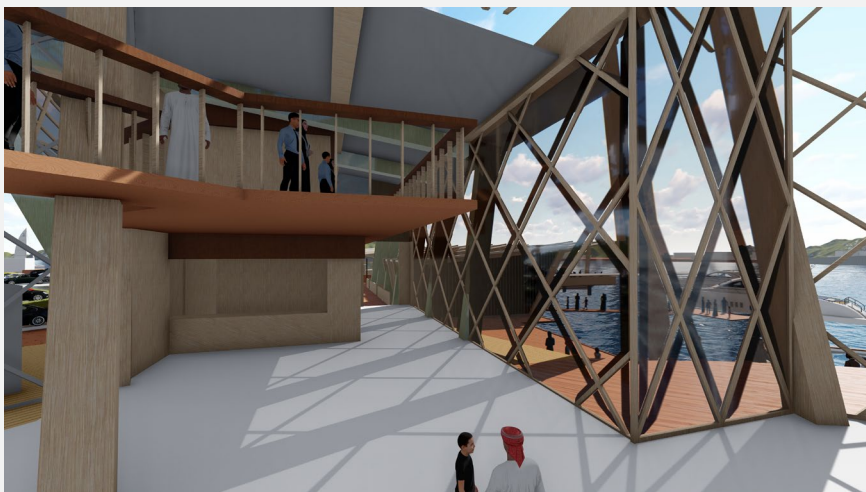


Figure 28: Terminal Building atrium
(Source: Author)



Figure 29: Open corridor facing restaurants of the terminal building
(Source: Author)



Figure 30: Atrium with huge aquarium of the terminal building
(Source: Author)

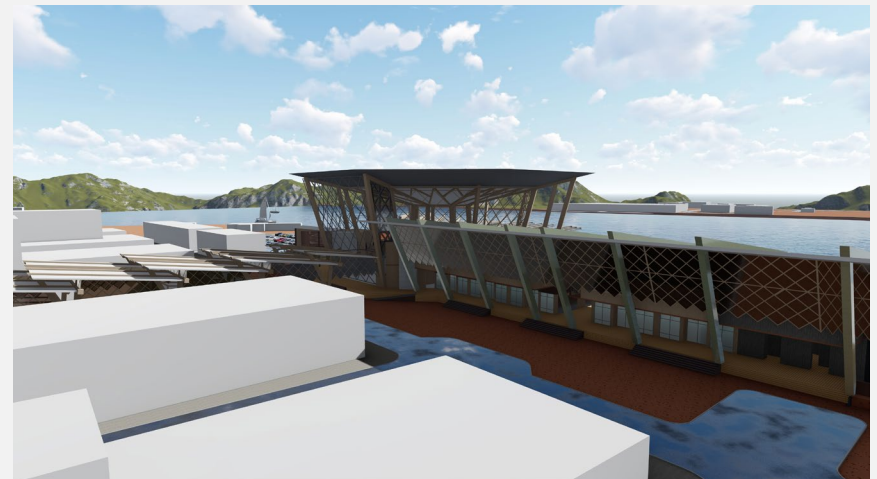


Figure 31: Bird eye view looking towards atrium of the terminal building
(Source: Author)

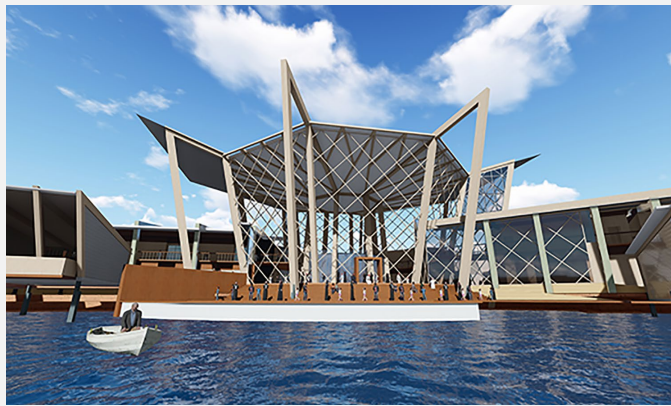


Figure 32: Public Promenade
(Source: Author)

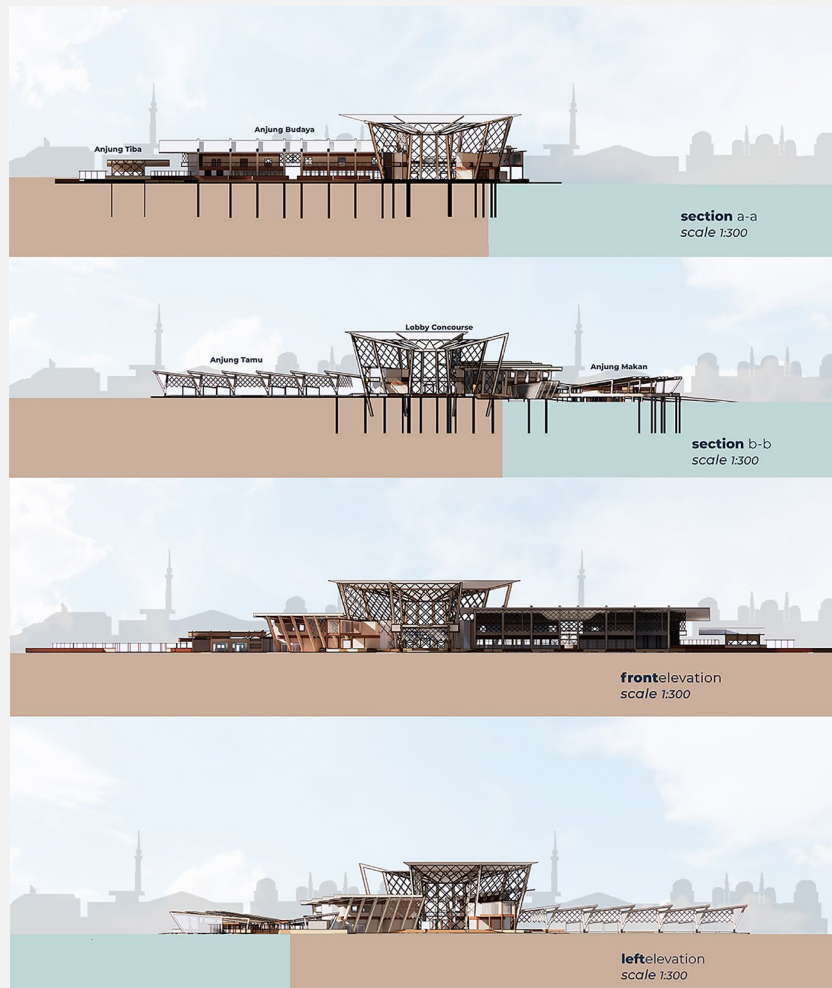


Figure 33: Terminal Building sections
(Source: Author)

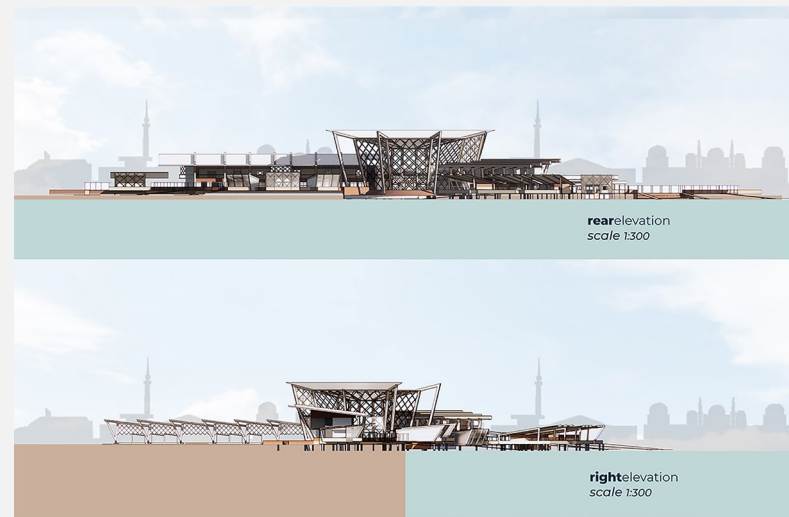


Figure 34: Terminal Building Elevation
(Source: Author)

CONCLUSION

This design thesis produced a holistic design of a Terminal and Community Hub that integrates the economic growth of Kuala Besut in order to give back the benefits to the local community. Moreover, the terminal introduces and promotes local culture, identity, and commercial activities that can strengthen the tourism and local business sector through a seamless community and sustainable design.

ACKNOWLEDGEMENT

This article is part of an architectural design thesis of Abdussalam Khalib for a degree in Master of Architecture under the supervision of Dr Ts. Zeenat Begam Yusof.

REFERENCES

- Abd Latif, Rohaizah. (2009). Development of Cultural and Heritage Resources In Kampong Raja, Besut, Terengganu In Promoting The Local Economy. In *Conference Proceedings* (Vol. 10, Pp. 325-330).
- Halim, M. A. S. A., Muda, M. S., Amin, W. A. A. W. M., & Salleh, A. M. M. (2015). The perception of coastal communities toward the relationship of social-entrepreneurship, socio-economic and quality of life. *Mediterranean Journal of Social Sciences*, 6(4), 667-667.
- Jabatan Laut Malaysia Wilayah Timur, Pejabat Laut Kuala Besut (8 Nov 2020). Statistik Bulanan Kemasukan Penumpang di Jeti Pelancong Kuala Besut.
- Muhammad Rusli, M. A. N. (2016). Maintenance management of facilities provided at Tourism Terminal Jetty.
- Rosniza, A., Usman, Y., Suriati, G., Abdul, R., Rosmiza, M. Z., Novel, L., & Mohd, F. (2012). The coastal beach of Besut, Terengganu as a preferred tourist destination. *Geografia. Malaysian Journal of Society and Space*, 8(4), 64-74.
- Wan Nordin, W. N., Anuar, A. N. A., & Ramli, R. R. (2022). The potential of traditional Malay woodcarving as a cultural heritage tourism product in Kuala Terengganu. *ESTEEM Journal Of Social Sciences And Humanities*, 6(2), 30-44.